

Business survey May 2016

Manufacturing industry, market services and construction

June 8, 2016

- **In May, industrial production continued to improve.** The equipment sector was buoyant, while the automobile and chemicals sectors lost ground.

Business leaders expect industrial activity to contract slightly in June.

- **Service sector activity** grew strongly in May. The accommodation and food and transport services sectors performed less well.

Staff levels increased.

Business leaders expect service sector activity to grow in June.

- **Construction sector activity rebounded** in both the construction of buildings and the specialised construction activities sectors.

Order books continued to firm.

Business leaders expect construction sector activity to decline slightly in June.

The business sentiment indicator in manufacturing industry* stood at 97 in May, after 99 in April.

The business sentiment indicator in services* stood at 98 in May, after 96 in April.

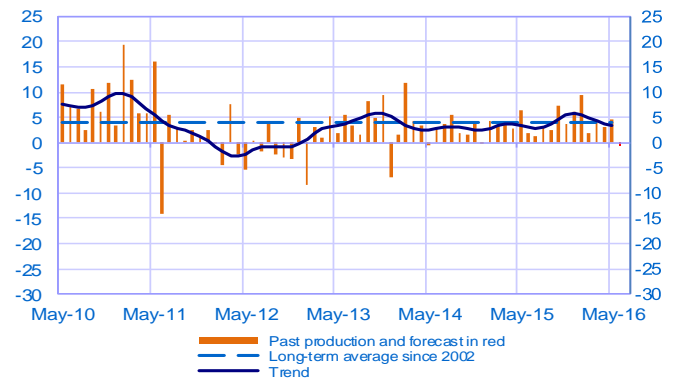
The business sentiment indicator in construction* stood at 97 in May, like in April.

According to the monthly index of business activity (MIBA), GDP is expected to increase by 0.2% in the second quarter of 2016 (second estimate, revised downwards by 0.1 percentage point).

* Calculations are based on survey data, SA-WDA and smoothed over five months

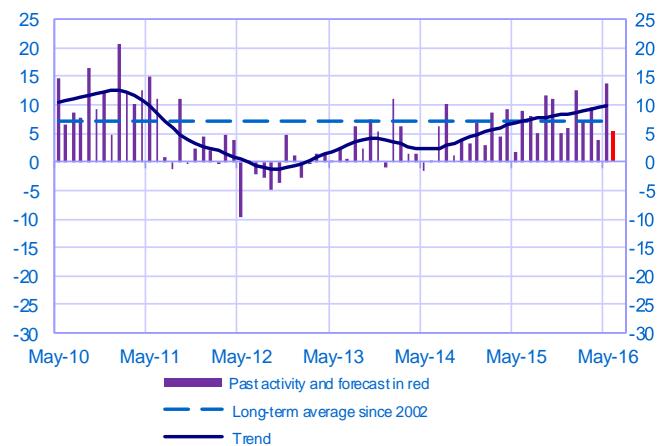
Opinion on the outlook for industrial production*

Balance of opinions, SA-WDA



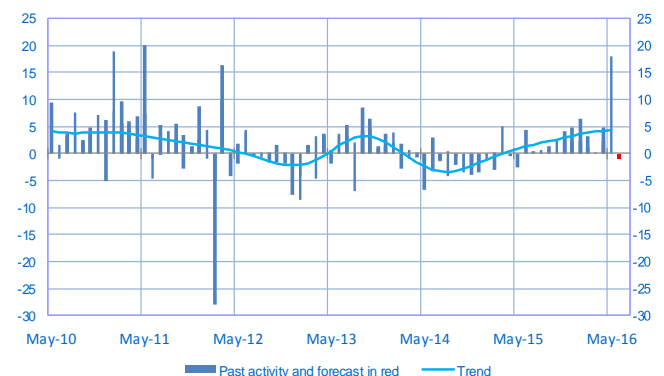
Opinion on the outlook for services activity*

Balance of opinions, SA-WDA



Opinion on the outlook for construction activity*

Balance of opinions, SA-WDA



* A positive (negative) balance of opinions corresponds to a rise (fall) in the evolution of activity

Manufacturing industry

	Jul-15	Aug-15	Sep-15	Oct-15	Nov-15	Dec-15	Jan-16	Feb-16	Mar-16	Apr-16	May-16	Jun-16
Change												Forecast
Production	1	3	2	7	4	6	9	2	4	3	4	-1
Deliveries	5	3	3	6	3	8	13	2	5	4	3	
Total orders	5	6	5	8	5	5	12	1	7	3	4	
Staff	0	-1	2	3	1	1	2	0	1	0	1	
Final goods prices	-1	-1	-1	-1	-1	-2	-3	-3	-2	-1	-1	
Commodity prices	0	-3	-3	-1	-2	-2	-4	-4	-3	-1	0	
Level												
Order books	6	7	9	8	8	8	7	7	7	7	9	
Inventories of finished goods	4	4	5	4	4	5	4	4	4	3	3	
Capacity utilisation rate	77.0	77.2	77.4	77.8	77.8	78.1	78.2	78.2	78.2	78.0	78.5	
Cash positions	9	9	10	11	10	11	11	10	10	9	9	

Services

	Jul-15	Aug-15	Sep-15	Oct-15	Nov-15	Dec-15	Jan-16	Feb-16	Mar-16	Apr-16	May-16	Jun-16
Change												Forecast
Activity	8	5	12	11	5	6	13	7	10	4	14	5
Aggregate demand	7	2	12	11	5	6	11	7	11	4	14	
Prices	2	-1	-1	-1	-2	-1	-2	-2	-1	0	0	
Staff	3	3	4	4	4	3	4	4	6	4	7	
Level												
Cash positions	14	14	13	14	14	9	12	11	16	12	13	

Construction

	Jul-15	Aug-15	Sep-15	Oct-15	Nov-15	Dec-15	Jan-16	Feb-16	Mar-16	Apr-16	May-16	Jun-16
Change												Forecast
Activity	0	1	1	2	3	5	6	3	0	5	18	-1
Estimates prices	-3	-3	-2	-2	-3	-2	-2	-2	-1	-1	0	
Staff	0	0	-1	0	-1	-1	0	1	-1	1	-1	
Level												
Order books	5	4	5	7	5	6	7	6	6	8	9	

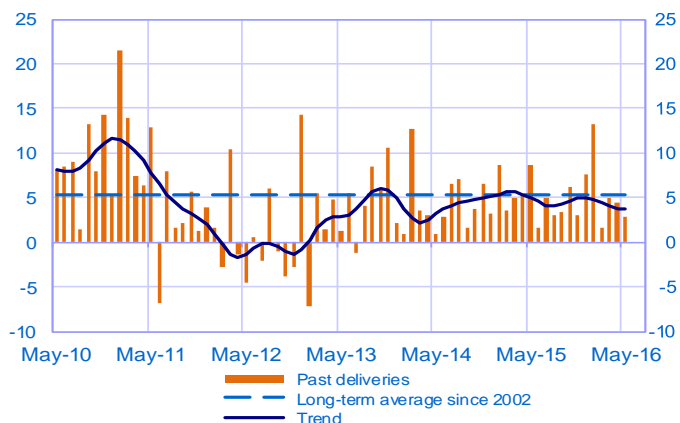
Notes:

- A positive (negative) balance of opinions corresponds to a rise (fall) in the evolution of activity.
- The last point corresponds to the business leaders' forecasts of future activity.
- The series are revised on a monthly basis. These revisions take into account additional gross data and the evolution of the seasonal and working-day adjustment depending on the latest available data. The business sentiment indicators of the previous months are revised accordingly.

Manufacturing industry

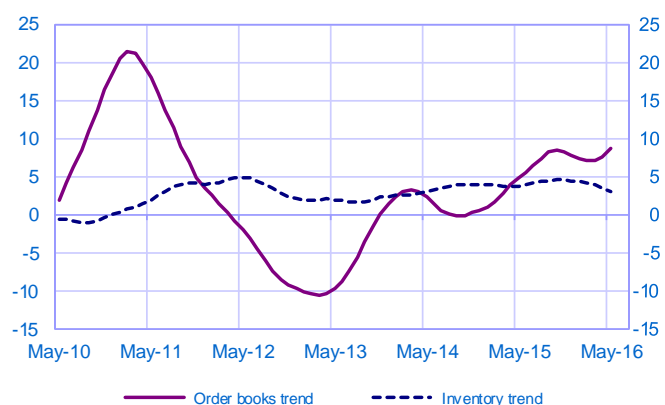
Changes in deliveries

Balance of opinions, SA-WDA



Inventories and order book level

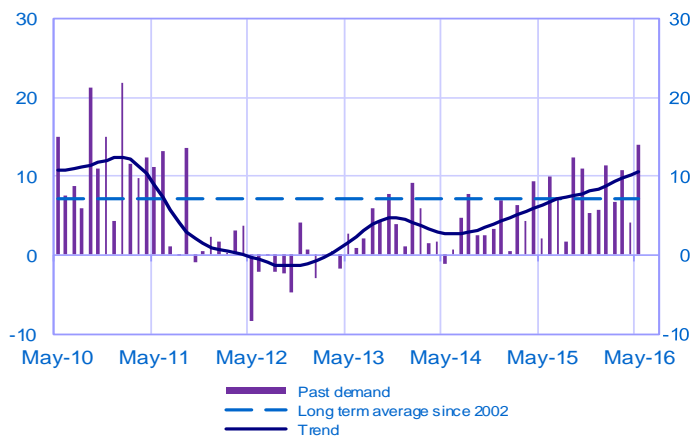
Balance of opinions, SA-WDA



Services

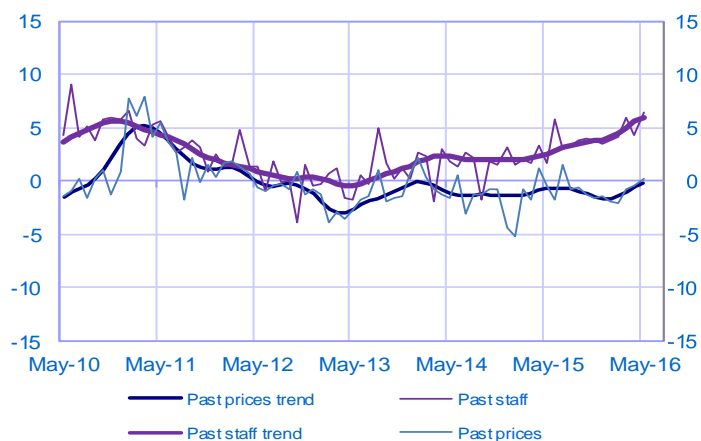
Changes in demand

Balance of opinions, SA-WDA



Changes in prices and staff

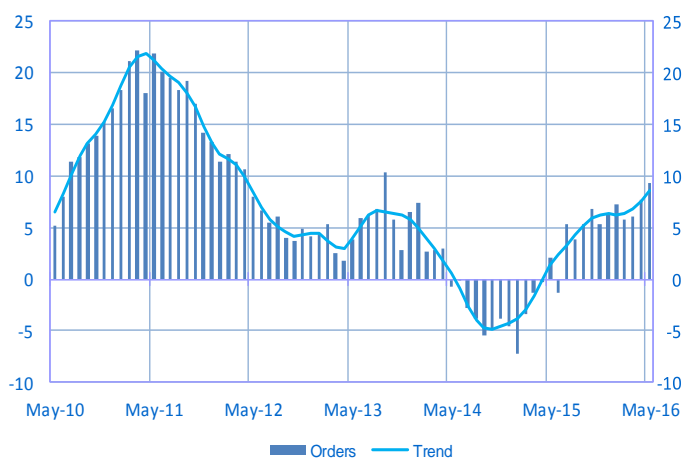
Balance of opinions, SA-WDA



Construction

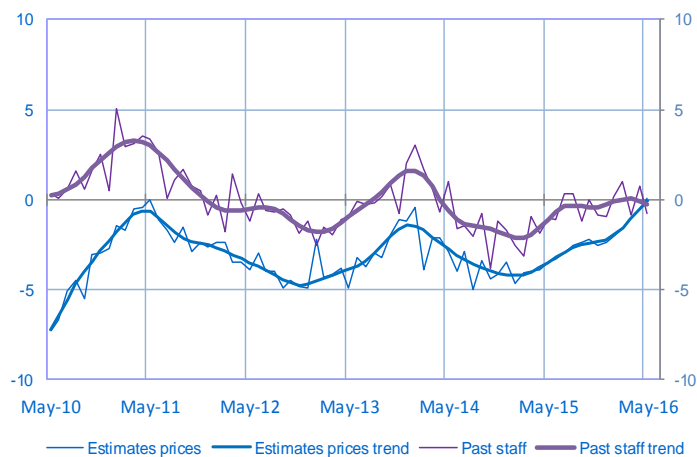
Order book level

Balance of opinions, SA-WDA



Changes in estimates prices and staff

Balance of opinions, SA-WDA



For further details, see [sectoral level information](#), the [methodology](#), the [publications calendar](#), the [contacts](#) and all statistical time series published by the Banque de France can be accessed [WEBSTAT Banque de France](#)

Subscription to press releases can be requested to 2503-DIFFUSION-UT@banque-france.fr